

H

Hello.

Varun Shringarpure

July 24, 2023

Horizon

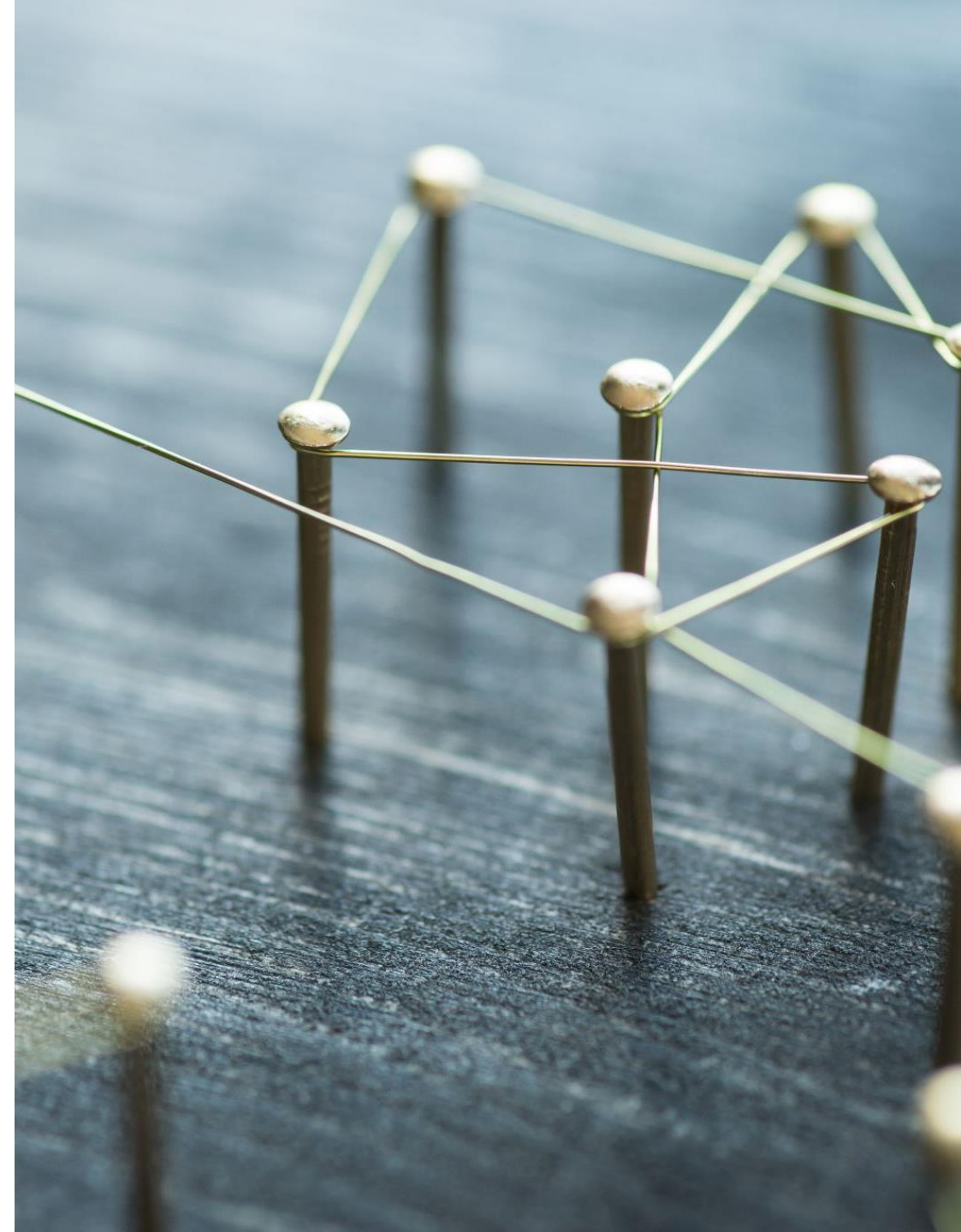
Agenda

Advanced Topics

- **Sitecore Configuration files loading Order**
- **Sitecore Config Patching**
- **Local Sitecore Troubleshooting and Debugging**

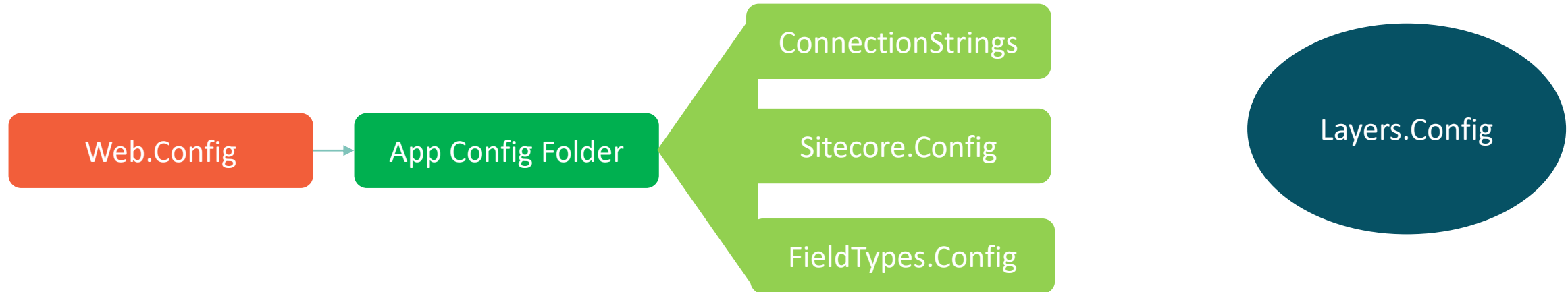
Advanced Topics

Sitecore Configuration Files Load Order



Sitecore Configuration Loading Order

- Sitecore – Configuration Driven!
- Everything is Configurable.
- One File – Too Messy!
- Organized in Multiple Files and Folders.
- Which Configuration is loaded when?
 - Layers.Config
 - Controls the Sequence
 - Load Order
 - Folder Or File – both works!
- View the Configuration Order – Sitecore Show Config – <https://<sitename>/Sitecore/admin/showconfig.aspx>



Demo

Layer	Config section	Folder	Description
Sitecore	<pre><layer name="Sitecore" includefolder = "/App_config/Sitecore/" ></pre>	Sitecore	<p>Reserved for Sitecore use.</p> <p>Contains configuration files for standard Sitecore components and features.</p> <p>You must not change the order in which configuration files load in this layer, because components are dependent on each other. Changing the default load order can cause components to stop working.</p>
Modules	<pre><layer name="Modules" includefolder = "/App_config/Modules /"></pre>	Modules	<p>Reserved for Sitecore use.</p> <p>Contains configuration files for official Sitecore modules.</p> <p>When you install a module, its configuration files are added to its associated folder under the Modules folder. In addition, the <code>layers.config</code> file is updated with the module's load order and the path to the module's configuration folder. By default, modules load in the order they were installed.</p>
Custom	<pre><layer name="Custom" includefolder = "/App_config/Include /"></pre>	Include	<p>Contains the patch files you create in order to modify settings in the default Sitecore configuration.</p>
Environment	<pre><layer name="Environment" includefolder = "/App_config/Environmen t /"></pre>	Environment	<p>Contains the patch files you create to configure Sitecore for different environments, such as QA, production, or development.</p> <p>For example, in a development environment, you can add patch files that enable additional logging information.</p>

- Reference: <https://doc.sitecore.com/xp/en/developers/90/platform-administration-and-architecture/configuration-layers.html>

○ Revise - Sitecore Configuration Loading Order

- Web.Config
- App_config/Layers.Config
 - LoadOrder
 - Path:
 - type="Folder"
 - type="File"

```
<loadOrder>
<add path="Folder23" type="Folder" />
<add path="Folder9/sitespecific.config" type="File" />
<add path="Folder1" type="Folder" />
</loadOrder>
```

```
<layer name="Modules" includeFolder="/App_Config/Modules/" />
<layer name="Custom" includeFolder="/App_Config/Include/">
  <loadOrder>
    <add path="Foundation" type="Folder" />
    <add path="Feature" type="Folder" />
    <add path="Project" type="Folder" />
  </loadOrder>
</layer>
```

When Sitecore encounters a <loadOrder> setting, it loads the configuration files in this order:

1. Folders and files that are specified in the <loadOrder> section load first, in the order they are listed.
2. In the previous example, the files in the Folder23 folder load first, then the sitespecific.config file, and then the files in the Folder1 folder.
3. Folders and files that are not specified in the <loadOrder> section load second.
4. They load in alphabetical order. Files that are placed in the root of a folder load before files within subfolders.
5. Review – that the Load Order is correct?

Advanced Topics

Sitecore Config Patching



Sitecore Config Patching

- Sitecore – Configuration Driven!
- Everything is Configurable.
- Change as per the need.
- Changing a Config:
 - Update an existing Config File
 - Create a new file
- Best Practice – Create a Patch File
- Patching:
 - Inserting an element before or after a specific element
 - patch:before
 - patch:after
 - Adding/Updating an attribute
 - patch:attribute
 - Replacing a Value
 - patch:instead
 - Deleting an element
 - patch:delete

```
<sitecore>
  <sc.variable name="dataFolder">
    <patch:attribute name="value">/App_Data/demo</patch:attribute>
  </sc.variable>
</sitecore>
```

```
<setting patch:instead="*[@name='MailServer']" name="MailServer" value="smtp.pepipost.com" />
```

```
<sessionEnd>
  <processor type="Feature.Booking.Processors.CallDropLead,Feature.Booking"
    patch:after="*[@type='Feature.Articles.Processors.AddArticleToDatabase,Feature.Articles']"/>
</sessionEnd>
```

```
<sitecore>
  <pipelines>
    <mvc.getPageItem>
      <processor type="Feature.Commerce.Account.Pipelines.LoginRedirect,Feature.Commerce.Account" patch:before="*[@type='Feature.Articles.Processors.AddArticleToSession,Feature.Articles']"/>
    </mvc.getPageItem>
  </pipelines>
  <settings>
    <setting name="UseDummyOTP" value="false" />
  </settings>
</sitecore>
```

Sitecore Config Patching - Steps

- Create a File
 - Custom Layer – Include Folder (Or one of the Sub Folders)
 - Environment Layer – Environment Folder
- Give it an extension - .config
- Start with a Basic Structure:

```
<?xml version="1.0" encoding="utf-8"?>  
<configuration>  
<sitecore>  
</sitecore>  
</configuration>
```
- In the <sitecore> section of the patch file, add the setting changes that you want to add to the configuration

Layer	Config section	Folder	Description
Sitecore	<pre><layer name="Sitecore" includefolder = "/App_config/Sitecore/" ></pre>	Sitecore	<p>Reserved for Sitecore use.</p> <p>Contains configuration files for standard Sitecore components and features.</p> <p>You must not change the order in which configuration files load in this layer, because components are dependent on each other. Changing the default load order can cause components to stop working.</p>
Modules	<pre><layer name="Modules" includefolder = "/App_config/Modules /"></pre>	Modules	<p>Reserved for Sitecore use.</p> <p>Contains configuration files for official Sitecore modules.</p> <p>When you install a module, its configuration files are added to its associated folder under the Modules folder. In addition, the <code>layers.config</code> file is updated with the module's load order and the path to the module's configuration folder. By default, modules load in the order they were installed.</p>
Custom	<pre><layer name="Custom" includefolder = "/App_config/Include /"></pre>	Include	<p>Contains the patch files you create in order to modify settings in the default Sitecore configuration.</p>
Environment	<pre><layer name="Environment" includefolder = "/App_config/Environmen t /"></pre>	Environment	<p>Contains the patch files you create to configure Sitecore for different environments, such as QA, production, or development.</p> <p>For example, in a development environment, you can add patch files that enable additional logging information.</p>

- Reference: <https://doc.sitecore.com/xp/en/developers/90/platform-administration-and-architecture/configuration-layers.html>

Advanced Topics

Local Sitecore Troubleshooting and Debugging



○ Advanced Topics

Troubleshooting

- First Place to Look – Sitecore Logs
- Sitecore Admin Section
 - Cache.aspx
- Control Panel
 - Indexing Manager

Demo

**Hori—
zontal**

Thx.